

Hoofdstuk 1

Alleen boek op tafel, laptop dicht...

De installatie van Windows Server 2016

Programma

Absentie

Presentatie H1

Opdracht 1.0.1 – wat is een server

Opdracht 5.0.1 – netwerkinstellingen

Afsluiten

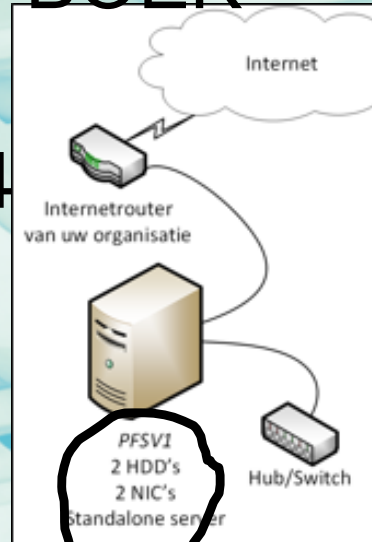
In dit hoofdstuk

- Installeren van Windows Server 2016 op een
- Windows Server 2016 configureren met bas

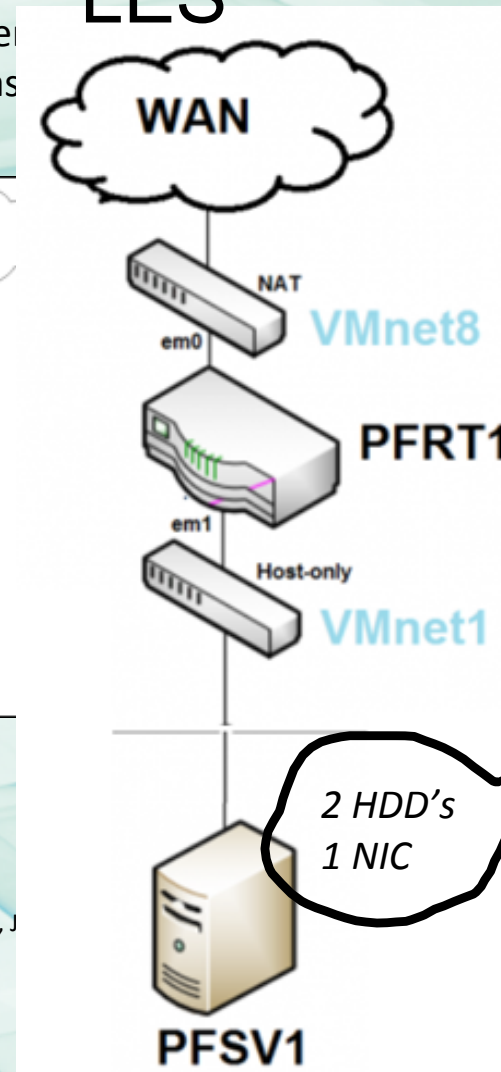
- Kennis
- Vaardigheden

lees p. 13-14

BOEK



LES



26-9-2018

Netwerkbeheer met Windows Server 2016, J

2



Windows Server 2016

- Editions:
- Windows Server 2016 Essentials
- Windows Server 2016 Standard
- Windows Server 2016 **Datacenter**

Virtualisatie	Organisatie
Nee	MKB
Beperkt	Groot
Volledig	Cloud

- Minimale hardware-eisen Windows Server 2016 Standard:
- Processor: 1,4 GHz
- RAM-geheugen: 512 MB
- Schijfruimte systeempartitie: 32 GB
- VGA-monitor: 1024 x 768
- Dvd-speler
- Toetsenbord
- Muis

Engels!

Aanbevolen:

100GB!

p. 15

Servertypen

- File server
- Print server
- Communicatieserver
- Proxyserver
- Webserver
- Mailserver
- Applicatieserver
- Databases
- Virtualisatie
- Remote Desktop Server

File server

- Schijfruimte

Print server

- Snelle en grote schijven

Communicatieserver

- RAM
- Snelle en grote harde schijven
- Internetverbinding

Applicatieserver

- Snelle processor
- RAM

p. 15-17

26-9-2018

Netwerkbeheer met Windows Server 2016, Jan Smets

4

The screenshot shows the Windows Server Catalog website. At the top, there is a search bar and navigation links for Home, Software, and Hardware. Below the navigation is a banner image of people in a server room. A message asks for feedback: "Feedback is important to us as we prepare to update the site. Would you like to take a survey?".

The main content area is divided into two columns:

- software testing status:**

Identify and verify the status of tested products for Windows Server

software testing status

Certified for Windows Server logo demonstrates that a mission critical or line-of-business application meets Microsoft's highest technical bar for Windows Server fundamentals, best practices and platform compatibility; attesting to efficient deployment capabilities in the Cloud and the Enterprise.

OS Versions

 - [Certified for Windows Server 2012 R2](#)
 - [Certified for Windows Server 2012](#)
 - [Certified for Windows Server 2008 R2](#)
- hardware testing status:**

Identify and verify the status of tested products for Windows Server

hardware testing status

The Certified for Windows Server logo demonstrates that a server system meets Microsoft's highest technical bar for security, reliability and manageability; and with other certified devices and drivers, it can support the roles, features and interfaces for Cloud and Enterprise workloads, as well as business critical applications.

OS Versions

 - [Certified for Windows Server 2016](#)
 - [Certified for Windows Server 2012 R2](#)
 - [Certified for Windows Server 2012](#)

On the right side, there is a section titled "what does the logo mean?". It includes a "Feedback" button and text explaining that products with the logo have been tested with Windows Server 2016, Windows Server 2012 R2, and Windows Server 2008 R2. It also mentions that other products may also be certified for Windows Server 2012 R2, 2012, and Windows Server 2008. A "Read more" link is provided.

At the bottom right, there is a vertical logo for "Briseman Uitgeverij Specialist in educatieve uitgeverij" with a large blue number "3".

26-9-2018

Netwerkbereit met Windows Server 2016, Jan Smets

p. 17-18

De installatie (1)

Language to install

Time and currency format

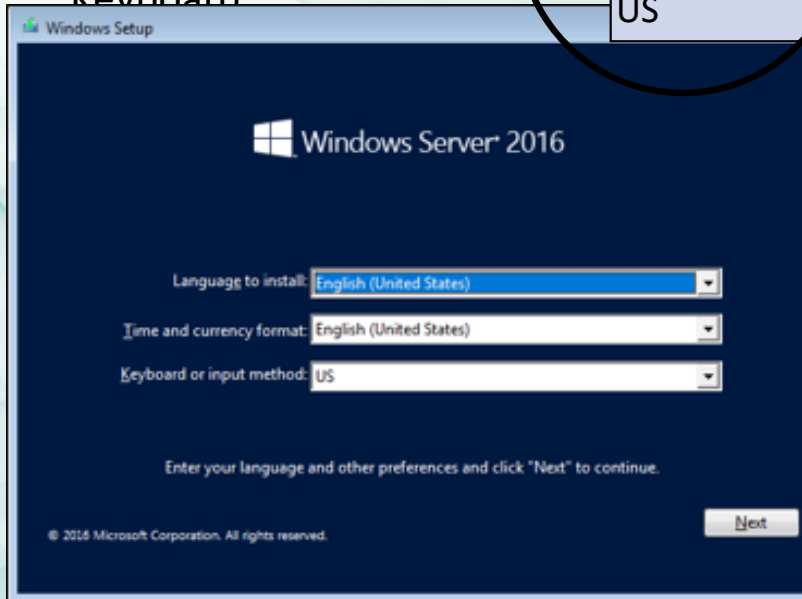
Keyboard

LET OP:

ENG

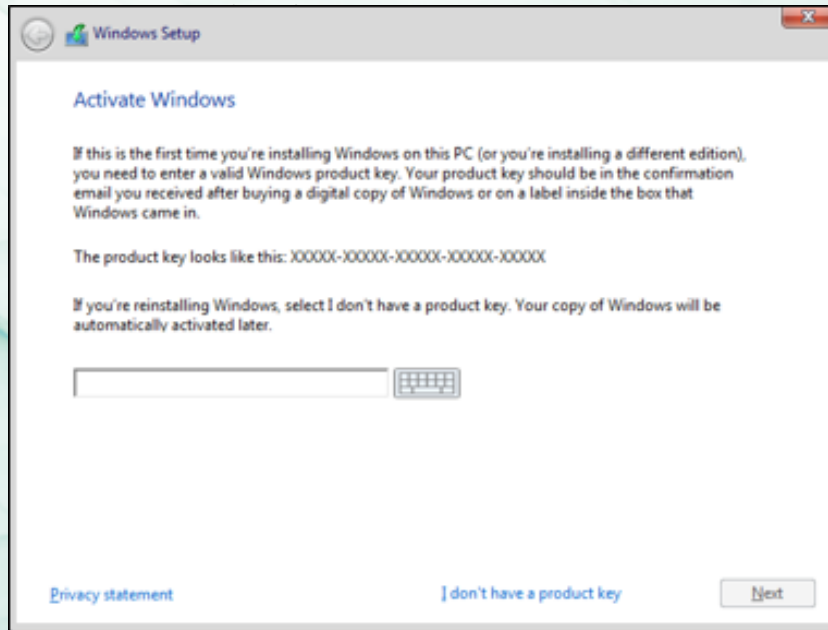
NL

US



p. 20

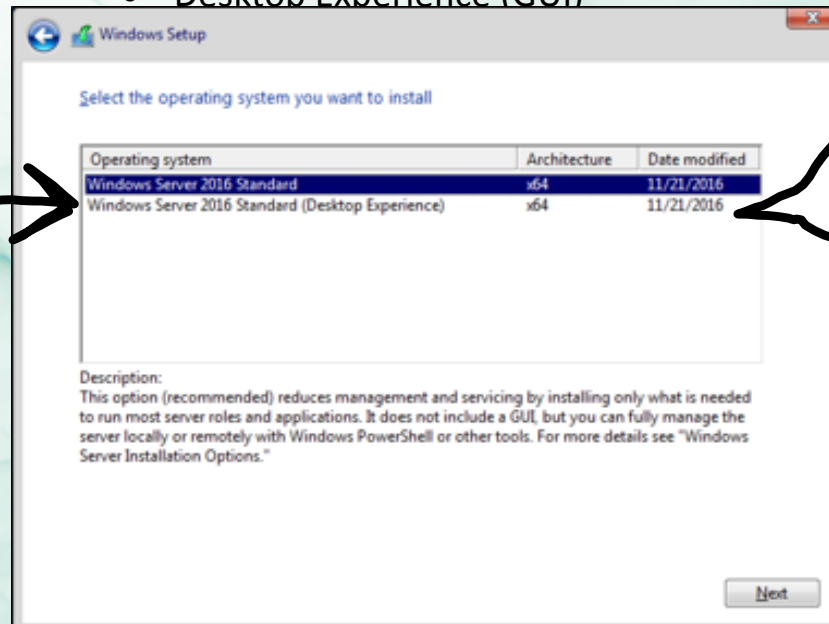
De installatie (2)



p. 22

De installatie (3)

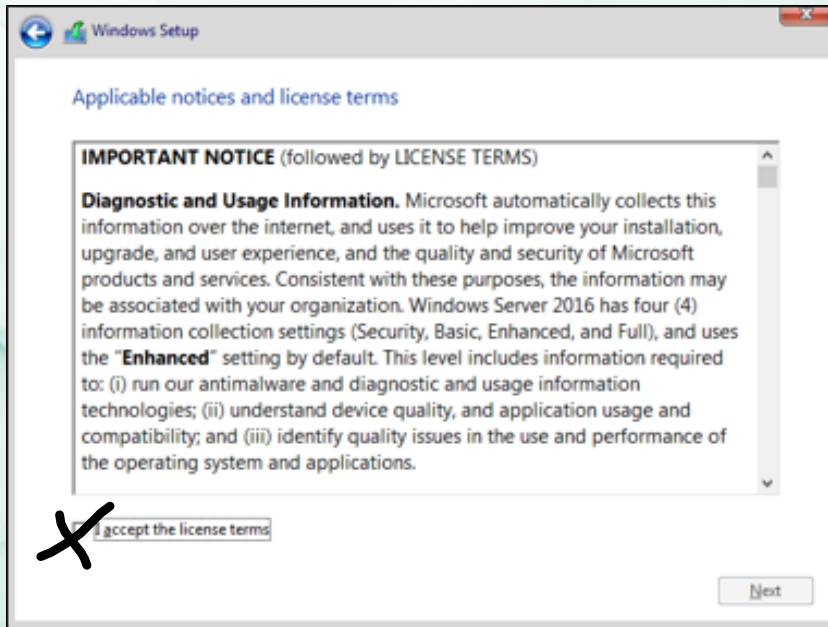
- Server Core
- Desktop Experience (GUI)



Kies optie 2!

p. 23

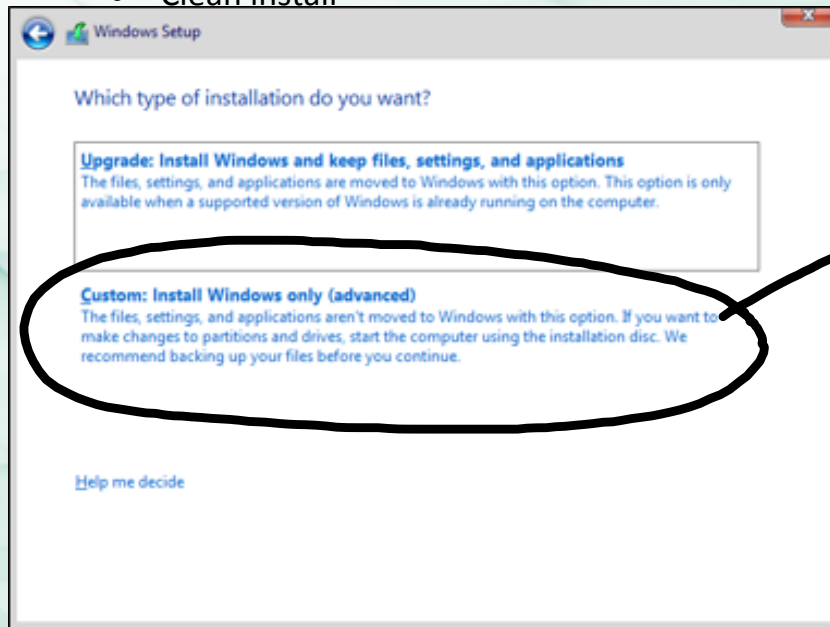
De installatie (4)



p. 24

De installatie (5)

- Upgrade
- Clean install

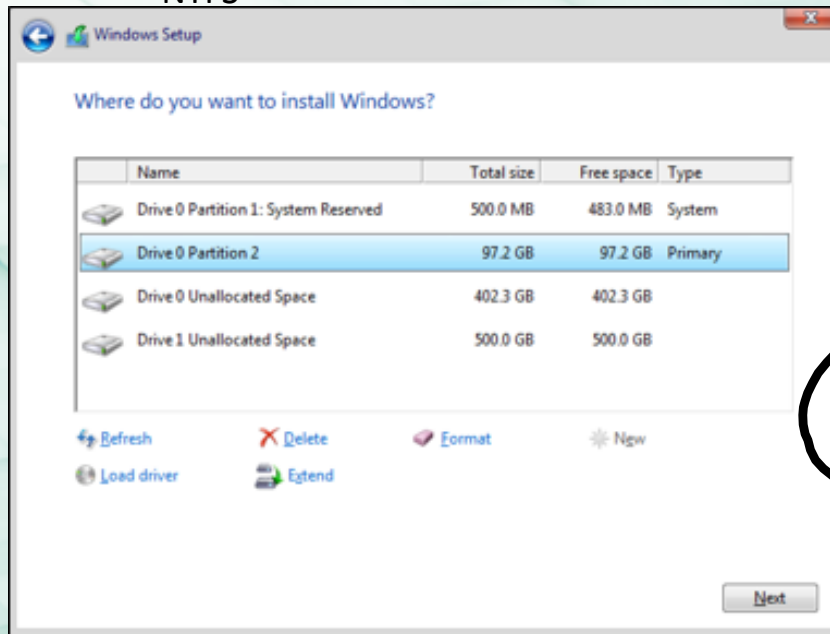


Kies optie 2:

p. 25

De installatie (6)

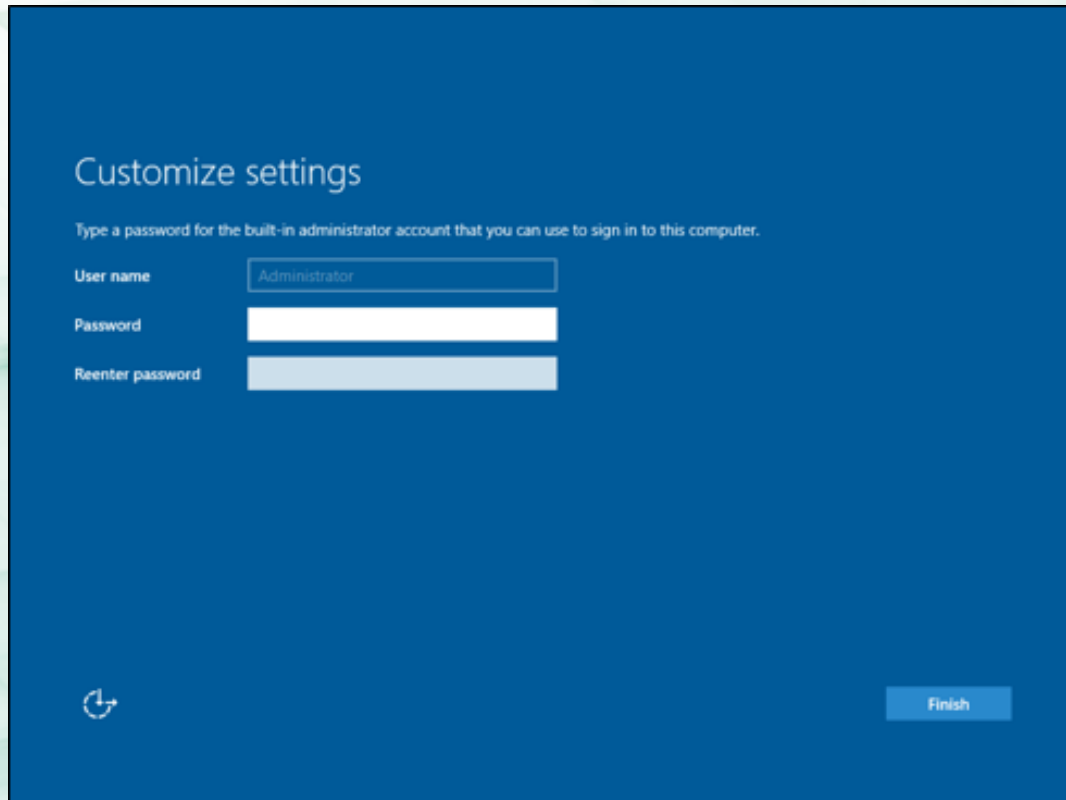
- Installatiepartitie
- NTFS



100GB!

p. 26-28

De installatie (7); Administrator password




Customize settings

Type a password for the built-in administrator account that you can use to sign in to this computer.

User name

Password

Reenter password



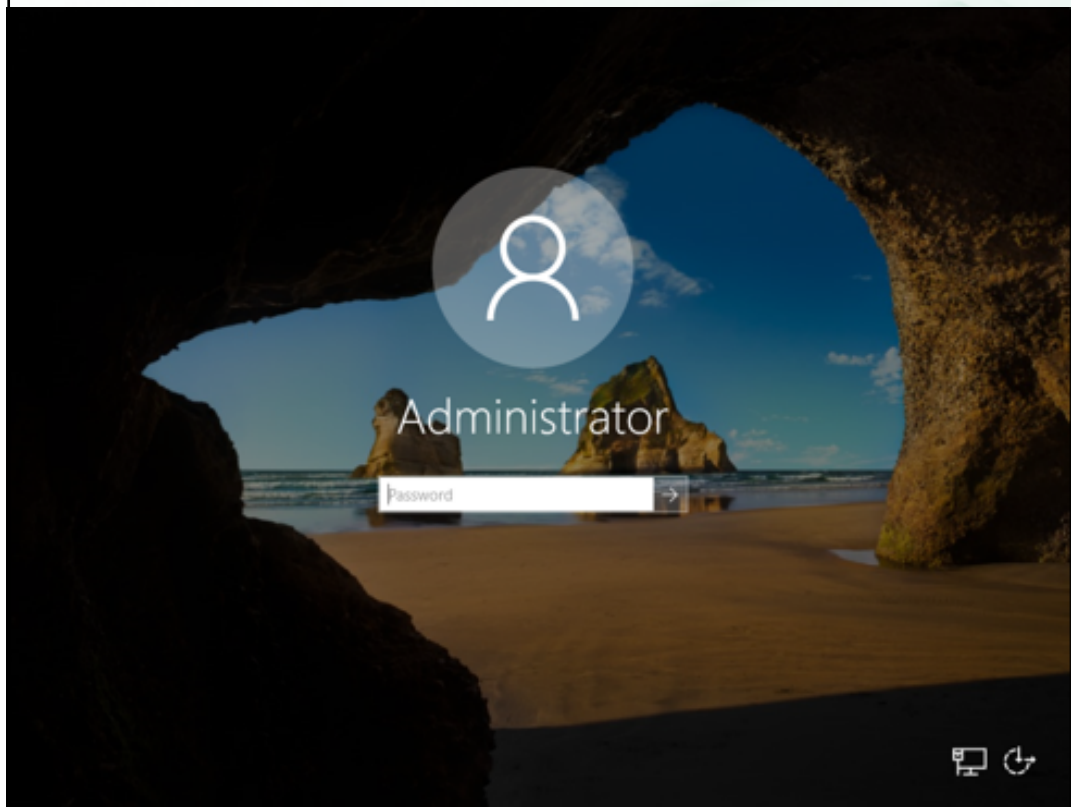
p. 29

Vergeet dit niet!

26-9-2018

Netwerkbeheer met Windows Server 2016, Jan Smets

12



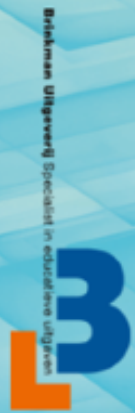
The image shows a Windows login screen for the Administrator user. The background is a scenic view of a beach with a large rock archway. A semi-transparent circle with a person icon is positioned above the name "Administrator". Below the name is a password input field with the placeholder text "Password" and a right-pointing arrow. In the bottom right corner of the login area, there are icons for a monitor and a refresh symbol.

p. 31

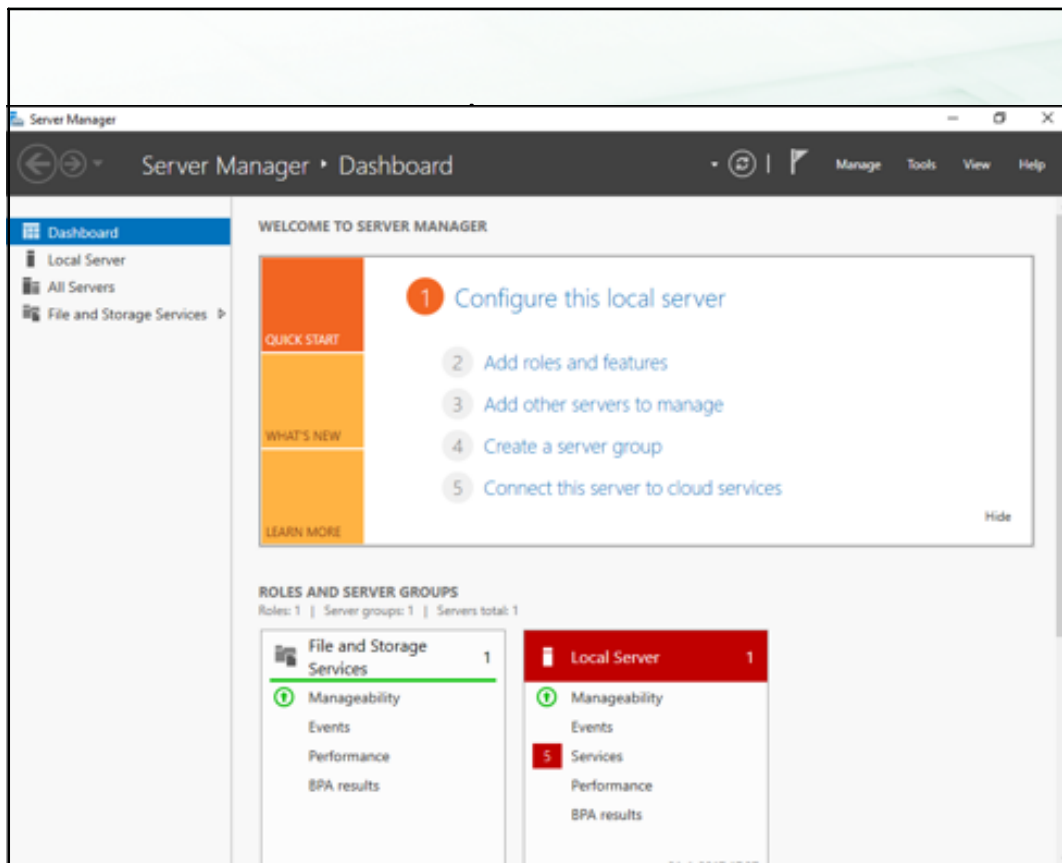
26-9-2018

Netwerkbeheer met Windows Server 2016, Jan Smets

13



Erasmus Hogeschool Brussel in educatieve uitdagingen



p. 32

Altijd gecontroleerd afsluiten



Shut down

Restart

p. 32

Choose a reason that best describes why you want to shut down this computer

Other (Unplanned) ▾

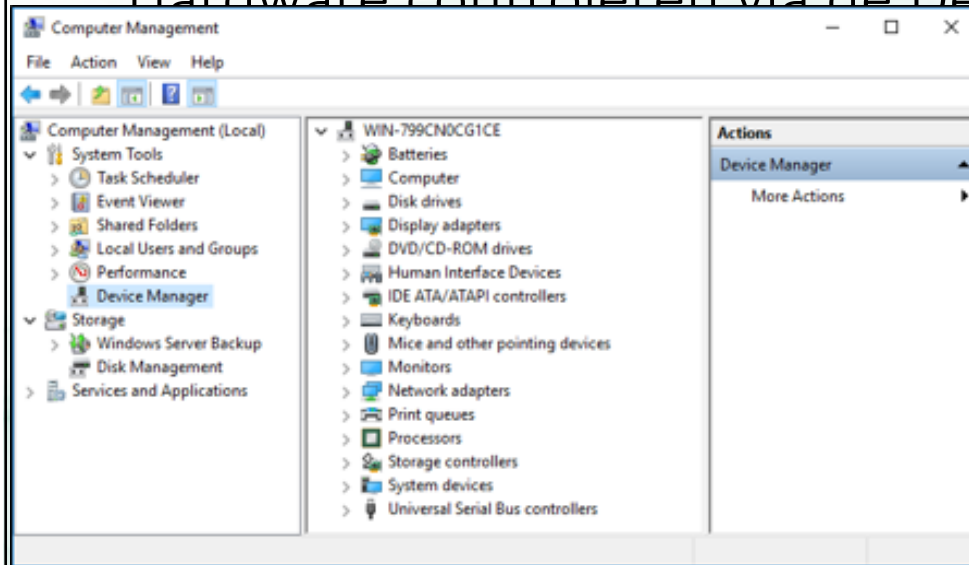
Continue

Choose a reason that best describes why you want to shut down this computer

Other (Planned) ▾

Continue

Hardware controleren via de Device manager



p. 36-38

View: Show hidden devices

View: Resources by type

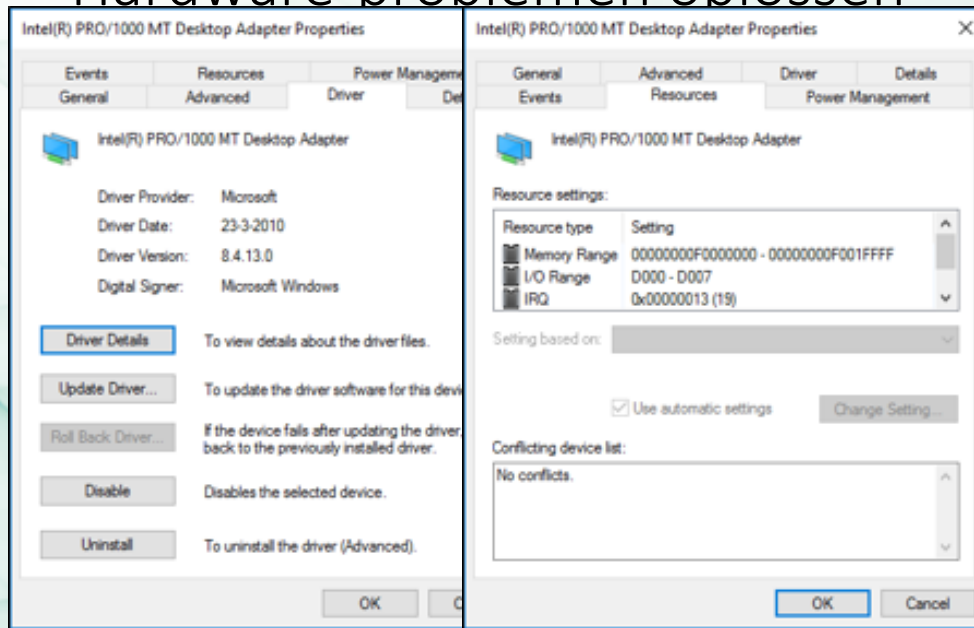
practicum 1.3.1.

26-9-2018

Netwerkkebeer met Windows Server 2016, Jan Smets

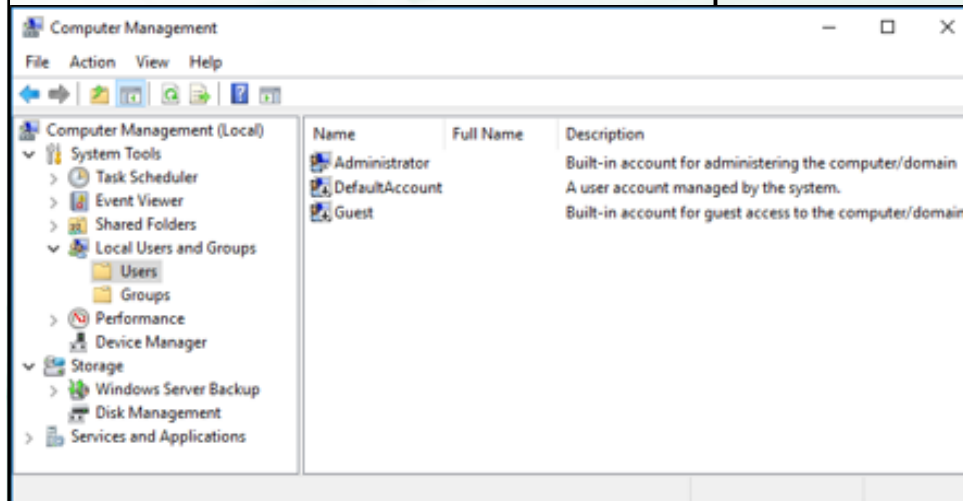
16

Hardware-problemen oplossen



p. 38

Machine local users op een standalone server



p. 38-44

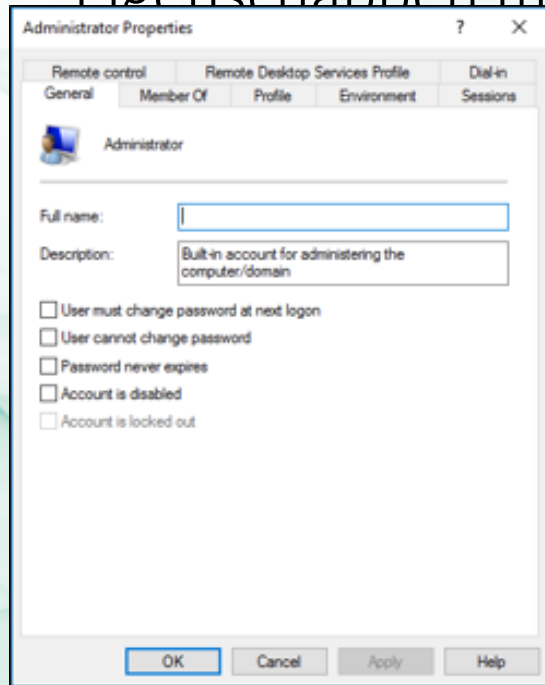
Control Panel ...
Administrative Tools ...
Computer Management ...
Local Users and Groups

26-9-2018

Netwerdbeheer met Windows Server 2016, Jan Smets

18

Eigenschappen machine local user



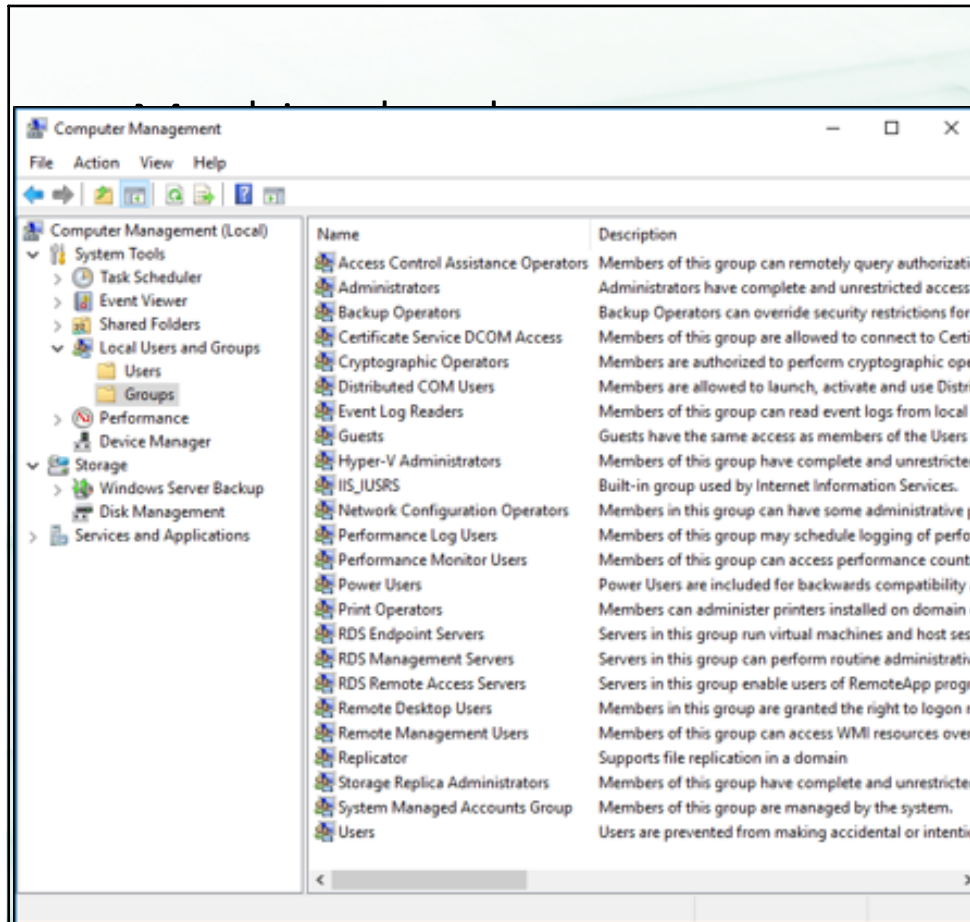
p. 41

Kies in jouw opleiding:

User cannot change...Password never expires...

Als je een baan hebt,

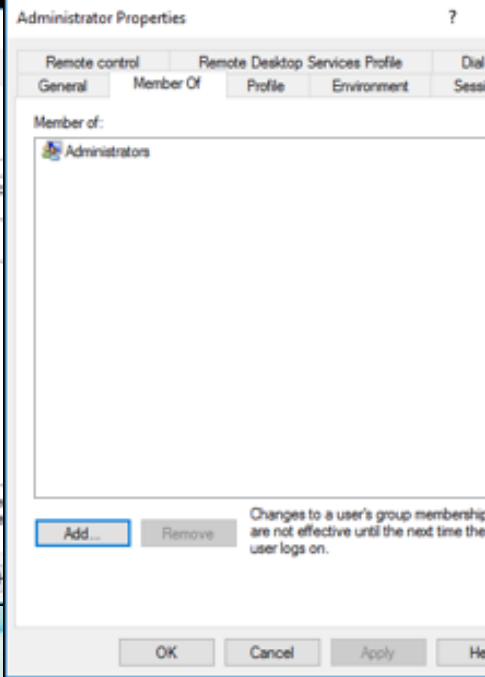
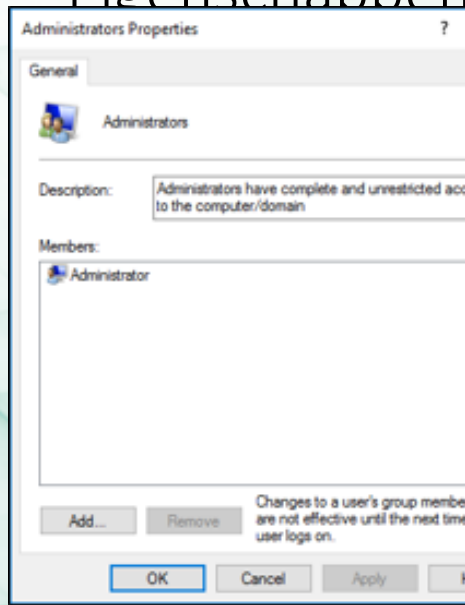
dan kies je dit NIET.



ndalone server

p. 42

Eigenschappen machine local group



Administrators



Member of



Administrator

evenen voor de installatie

Language to install: ENg (ELO)

Time and currency format: NL

Keyboard or input method: US

Product key: *****.*****.

Operating System: WS2016 Datacenter

Server Core
 Desktop Experience

I accept the license terms

Type of installation: Upgrade
 Custom (advanced)

Grootte installatiepartitie: 100 GB 97.2


Op schijf: Disk 0

Primary

Administrator password: *****

en van de installatie

Starten, inloggen en afsluiten verloopt correct:

22 

4 September - 30 September

Week 39 - Lesweek 1.4

In deze les(sen):

- De installatie van Windows Server 2016 (vervolg)

Voor deze les(sen) heb je nodig:

- DEEL 1 - paragraaf 1.0 t/m 1.2

Wikiwijs - 1 - De installatie

Gedetailleerde uitwerking van de opdracht(en):

- Practicum 1.2.1 - Installatie op de eerste server,

Inzenden opdracht(en):

Opdracht 1.0.1: Server

Practicum 5.0.1: Netwerkinstellingen



4 September - 30 September

Week 39 - Lesweek 1.4

In deze les(sen):

- De installatie van Windows Server 2016 (vervolg)

Voor deze les(sen) heb je nodig:

- DEEL 1 - paragraaf 1.0 t/m 1.2

Wikiwijs - 1 - De installatie

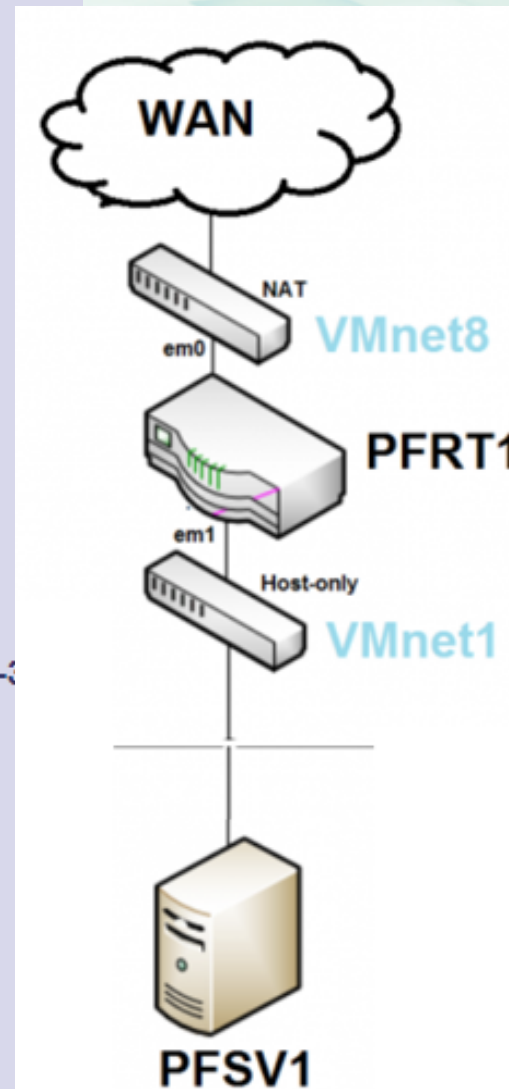
Gedetailleerde uitwerking van de opdracht(en):

- Practicum 1.2.1 - Installatie op de eerste server, p. 18--3

Inzenden opdracht(en):

Opdracht 1.0.1: Server

Practicum 5.0.1: Netwerkinstellingen



4

Basisconfiguratie (1)

Computer name	WIN-7NN8KPN2GTV	Last installed updates	Never
Workgroup	WORKGROUP	Windows Update	Download updates only, using Windows Update
		Last checked for updates	Never
Windows Firewall	Public: On, Private: On	Windows Defender	Real-Time Protection: On
Remote management	Enabled	Feedback & Diagnostics	Settings
Remote Desktop	Disabled	IE Enhanced Security Configuration	On
NIC Teaming	Disabled	Time zone	(UTC+01:00) Amsterdam, Berlin, Bern, Rome, Stockholm, Vienna
Ethernet	IPv4 address assigned by DHCP, IP	Product ID	00377-70000-06256-AA888 (activated)
Ethernet 2	IPv4 address assigned by DHCP, IP		
Operating system version	Microsoft Windows Server 2016 Standard	Processors	Intel(R) Core(TM) i7-6700HQ CPU @ 2.60GHz
Hardware information	innotek GmbH VirtualBox	Installed memory (RAM)	2 GB
		Total disk space	97.17 GB

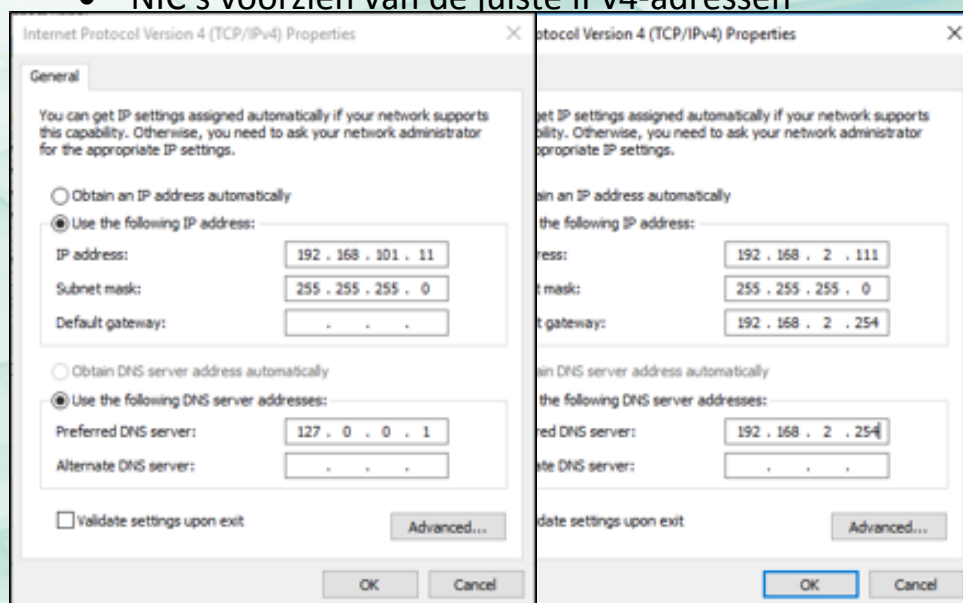
26-9-2018

Netwerkbbeher met Windows Server 2016, Jan Smets

25

Basisconfiguratie (2)

- Namen van de NIC's aanpassen
- LanConnectie
- InternetConnectie
- NIC's voorzien van de juiste IPv4-adressen



26-9-2018

Netwerkbbeer met Windows Server 2016, Jan Smets

26

